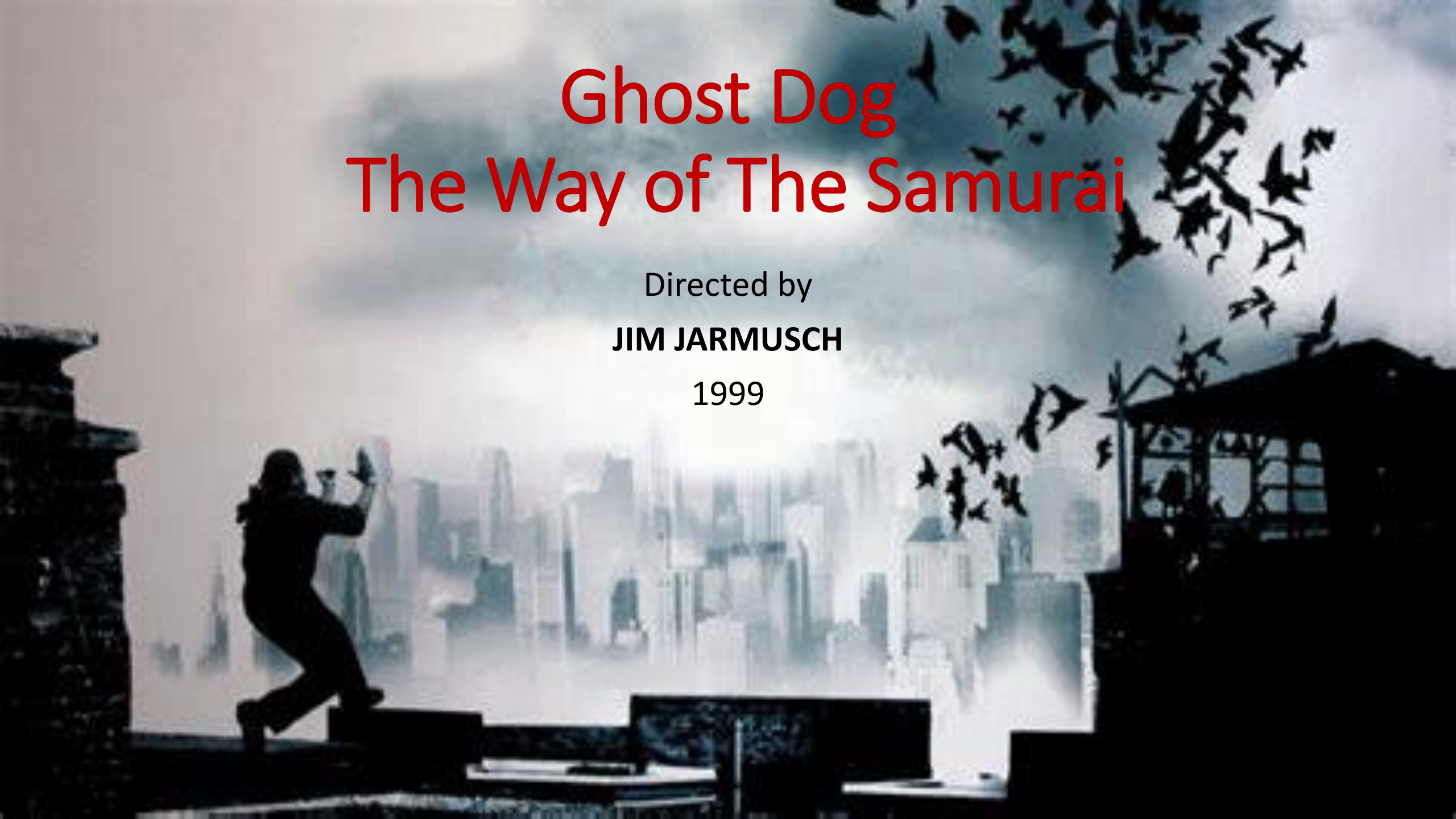


Ghost Dog The Way of The Samurai

Directed by

JIM JARMUSCH

1999



POSTMODERNISM

- MID TO **LATE 20TH CENTURY** MOVEMENT INVOLVING ALL TYPE OF CREATIVE ARTS
- REACTION **AGAINST MODERNISM**
- **MODERNISM:**
 - DICTATORSHIP OF THE DIRECTOR: A SINGULAR VISION
 - CHARACTERS PORTRAYED AS TRUE
 - MINIMALISM – precise & simple frames
 - FOCUS ON NARRATIVE
 - DIALOGUES SERVE THE STORY



POSTMODERNISM



- WHAT DOES IT DO?

SABOTAGES MAINSTREAM CONVENTIONS OF NARRATIVE STRUCTURE AND CHARACTERIZATION

- HOW ?
 - **METAFICTION**
 - **PASTICHE**
 - **DISTORTION OF SPACE AND TIME**

METAFICTION

- METAFICTION REMINDS THE AUDIENCE THEY ARE WATCHING A WORK OF **FICTION**
- IT IS USED AS A **FORM OF PARODY** OR AS A TOOL TO SABOTAGE CONVENTIONS
- KEY NOTION OF **MISE EN ABYME**



PASTICHE

A black and white photograph of a person in silhouette running on a rooftop ledge. The person is in the lower-left foreground, moving towards the right. In the background, a city skyline is visible through a hazy, overcast sky. A large flock of birds is flying in the upper right quadrant of the image. The overall mood is dramatic and cinematic.

- **PAY HOMAGE TO DIFFERENT GENRES**

- **GANGSTER MOVIES**
- **SAMOURAI MOVIES**
- **WESTERN MOVIES**



PASTICHE

- **INTERTEXTUALITY:** references to other texts or movies
 - **Hagakure**, Yamamoto Tsunetomo 1716
 - **Frankenstein**, Mary Shelley 1818
 - **Rashomon**, Ryunosuke Akutagawa 1915
 - **Rashomon**, Akira Kurosawa 1950
 - **Le Samourai**, Jean-Pierre Melville 1967
- **MIXING Highbrow (intellectual) AND Lowbrow (popular) Culture**
 - Literature, cartoons and arthouse movies

HAGAKURE

THE BOOK OF THE SAMURAI

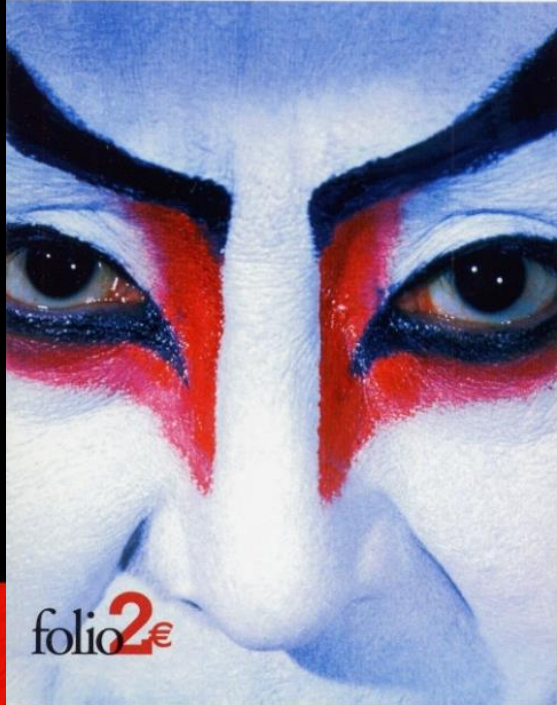
With a revised introduction



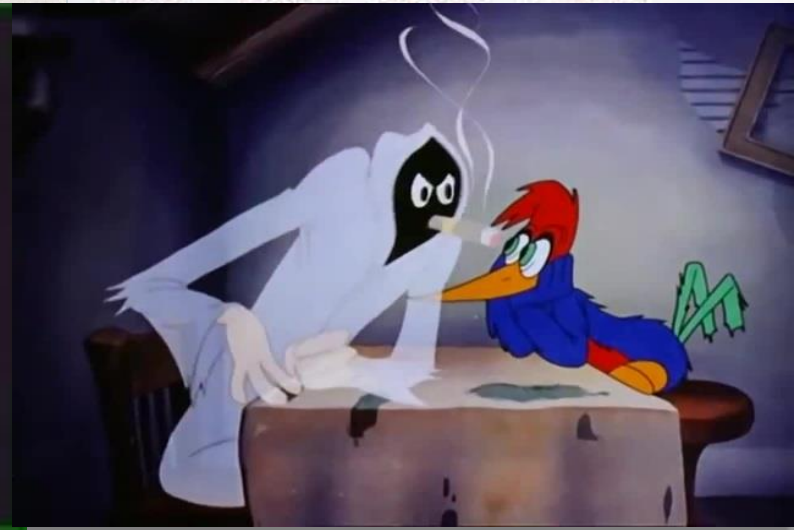
YAMAMOTO TSUNETOMO

Translated by William Scott Wilson

Ryūnosuke
Akutagawa
Rashōmon



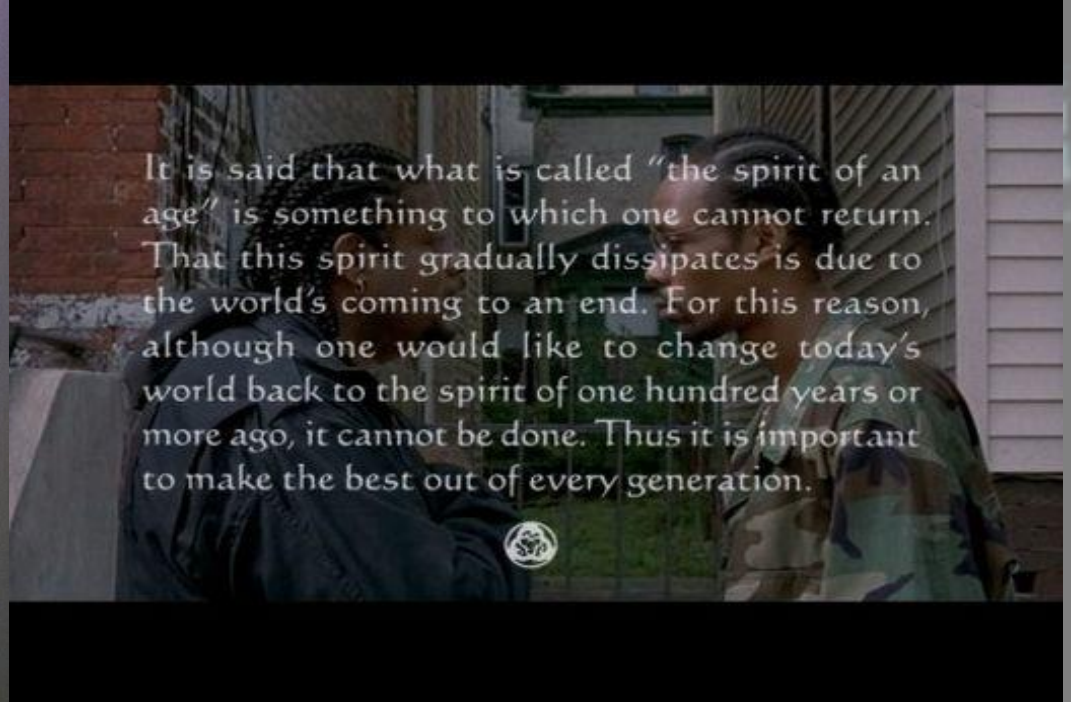
folio **2€**



DISTORTION OF SPACE AND TIME

- **NOSTALGIA** FOR A GOLDEN AGE
- **TECHNOLOGY** versus **TRADITION**
- **MIXING DIFFERENT MEDIA**





CONCLUSION

- **FRAGMENTED VISION(s)**
- **FOCUS ON CHARACTERS**
- **AUDIENCE MUST RECONSTRUCT MEANING**
- **OPEN ENDING**

