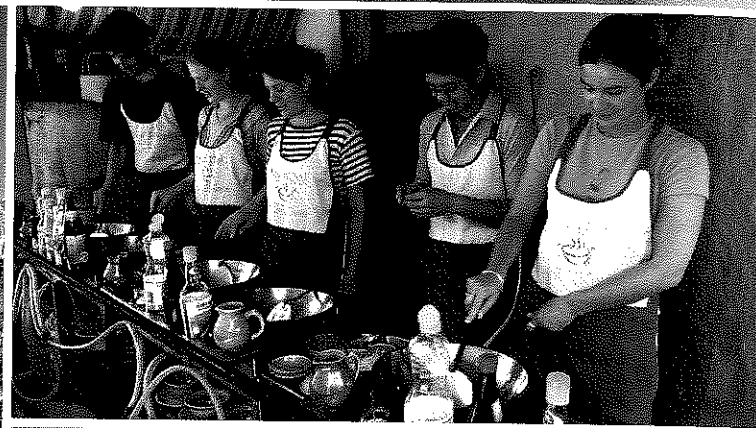


Traveller's Tree

The BBC radio travel show *Traveller's Tree* starts with one of the fastest growing sectors in the holiday industry and the buzzword of the day: 'niche' travel, for those with particular interests who are tired of 'flopout' beach holidays.



LISTENING

1A Work in pairs and look at the photos. Which holidays appeal/don't appeal to you?

B Read the programme listing. What is the difference between a 'niche' holiday and a 'flopout' holiday?

2A ▶ 3.1 Listen to the programme. Number the niche holidays in the order you hear them.

- Thai cooking week
- Singing on the Nile
- Historical cruise
- Sri Lanka for tea lovers
- Bird watching
- Tour of Chernobyl and Pripyat
- Tour of battlefields

B Listen again. Are the sentences true (T) or false (F)? Correct the false sentences.

- 1 Niche holidays are being offered by more tour operators.
- 2 Alison Rice describes 'niche' holidays as different from activity holidays.
- 3 Charlie Connolly thinks the best reason for going to a place is to look at nice views.
- 4 At the end of a singing holiday, you make a CD to sell to the local people.
- 5 In Chernobyl, you don't go into the nuclear reactor.
- 6 The school at Pripyat near Chernobyl is empty.
- 7 A lot of people have posted messages on the Traveller's Tree messageboard.
- 8 A contributor, Dilly Gaffe, likes the idea of a niche holiday.

C Work in pairs and discuss. Would any of the niche holidays mentioned in the programme interest you?

VOCABULARY | locations

3A Match the sentence halves.

- 1 Australia is the least **densely populated** continent, g
- 2 People who live in **close proximity** to Los Angeles airport
- 3 Sir Edmund Hillary and Sherpa Tenzing spent fifteen minutes at the **summit** of Everest
- 4 Cape Town is about **half-way between** Santiago, Chile
- 5 Part of Hong Kong is an island, and part is
- 6 The Caribbean island of Haiti was once **heavily forested**,
- 7 The most **remote** and **unspoilt** place in the UK is Foula,
- 8 Lake Baikal is located **on the edge** of Siberia

- a) before heading back down the southern slope.
- b) but it's now almost completely **barren**.
- c) an island just **off the coast** of northern Scotland.
- d) on a **peninsula** connected to mainland China.
- e) were found to have higher than normal blood pressure.
- f) and contains twenty percent of the world's fresh water.
- g) with just 2.6 people per square kilometre.
- h) and Perth, Australia **as the crow flies**.

B Which of the expressions in bold in Exercise 3A:

- talk about location/distance?
- are the names of geographical features?
- describe the character of a place?


C Work in pairs and take turns. Student A: close your book. Student B: make questions out of the sentences in Exercise 3A and ask your partner.

Which continent is the least densely populated?

GRAMMAR future forms review

4A Check what you know. Complete the conversations with an appropriate form of the verbs in brackets. Sometimes there is more than one possibility.


- 1 A: So, are you looking forward to your Nile trip?
B: Yes, and Francesco says he's going to learn (he/learn) Arabic ... in four weeks!
- 2 A: _____ (you/do) anything interesting next summer?
B: Yes, _____ (we/go) to New Zealand in July.
- 3 A: _____ (The plane/land) very early on Friday morning.
B: When's the first tour?
A: As soon as _____ (we get) there, I think.
- 4 A: It's in Thailand, and it says here, '_____ (It/likely/rain) every afternoon, but expect to walk twenty kilometres a day, rain or shine.'
B: I expect _____ (it/be) quite hard work.
A: I don't know. _____ (I/check) with Tess. She was over there last year.
- 5 A: _____ (We/go) to Ukraine this year, we haven't decided yet.
B: Sounds interesting.
A: Yes, and then _____ (we/stop off) in Poland to see Magda on the way home.
- 6 A: Mike _____ (think/go) on a trek to Machu Picchu in Peru.
B: It's quite a hard walk, I've heard.
A: Yeah. He _____ (hope/ask) people to sponsor him for charity.

B  3.2 Listen and check your answers.

C Match rules 1–10 with the examples in Exercise 4A.

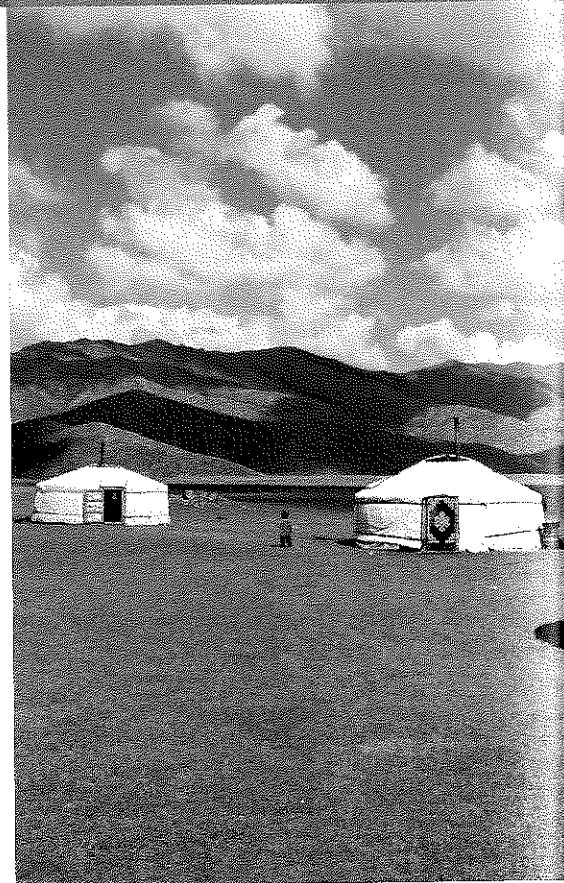
Rules:

- Use the present continuous for a definite arrangement often involving other people. 2A, 2B
- Use *be going to/be planning to/be hoping to* + infinitive or *be thinking of* + *-ing* for a general intention which the speaker has thought about before.
- Use *will ('ll)* + infinitive for a decision which the speaker has just made.
- Use *will ('ll)* + infinitive for predicting, often with verbs such as *think*, *expect* and adverbs such as *probably*, *definitely*.
- Use *be likely to* for a probable intention or prediction.
- Use *might/could* + infinitive for an intention or prediction that is not certain.
- Use the present simple for a future timetable or schedule.
- Use the present simple for the future after conjunctions such as *when*, *as soon as*, *after*, *in case*.

D  3.3 Listen to the pronunciation of the future forms in connected speech. Then listen and repeat.

- What will you do if he doesn't phone? /wɒtəljə/
- What are you going to do after class? /wɒtəjə/
- Where are you likely to be tonight? /werəjə/
- Who will be there? /hu:l/
- When will you have time to talk? /wenəljə/
- When are you meeting them? /wenəjə/

 page 132 LANGUAGEBANK



PRACTICE

5A Underline the best alternative in the sentences.

- We're going/We might go to Venezuela on holiday this year. I booked yesterday.
- We'll probably/We're going to go camping but we're not sure yet.
- On Saturday, I'm meeting/I'll meet some friends for lunch.
- In the future I'm using/I'm going to use English to get a better job.
- I think it is raining/will rain this weekend.
- My last bus home goes/is going to go at five past midnight.
- There's no lesson next week? In that case I'm staying/I'll stay at home and study.
- A friend of mine is thinking of/hoping travelling to China next year.
- I always carry a torch in my bag in case I need/I'll need it.
- I might/I'm not likely to live abroad in the future.

B Change five of the sentences so that they are true for you.

C Work in pairs and take turns. Student A: tell your partner your sentences. Student B: ask follow-up questions.

A: I might go to Croatia on holiday this year.
B: Sounds good. Whereabouts in Croatia?