

New Zealand

New Zealand is an island country that is made up of two major islands called the **North Island** and the **South Island**. It is situated in the South Pacific. The capital city is Wellington but the largest city is Auckland.

Most people in New Zealand speak English but the Maori language is also spoken there by about 4% of the population. After the Second World War, Maori were discouraged to speak their language but in 1987 their language was declared as official language too. Many places now have dual Maori and English names. Maori were the first people who came to New



Queen of New Zealand.
a Governor General. New
official anthems: "God
New Zealand".

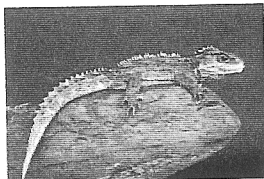
Zealand from Polynesia. New Zealand was first discovered by Europeans in 1642 when Dutch sailor Abel Tasman arrived. He left New Zealand because several members of his crew were killed by Maoris. Then in 1769 English Captain James Cook arrived and mapped the land.



Queen Elizabeth II is officially
She is represented in New Zealand by
Zealand is a country that has two
save the Queen" and "God defend



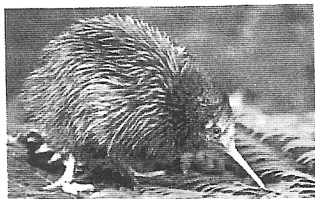
In New Zealand there are many unique species of animals. Some of them cannot be found anywhere else in the world. The reason for this that New Zealand was cut off from the rest of the land on Earth for 80 million years.



Mesozoic era.

The oldest living kind of reptile is the native New Zealand Tuatara. Tuataras can live up to 300 years. It is estimated that Tuataras can be traced back 190 million years to the

Another native bird of New Zealand (the Moa) was one of the largest birds in history - that was up to 3.6m tall and weighed about 300kg. They don't live



any more because they were hunted by the Maoris. New Zealand's national symbol is a nocturnal flightless bird that is called the kiwi. The weta is the largest and heaviest insect in the world.



The term 'Kiwi' is also used as a nickname for a New Zealander.

I Complete the table and talk about New Zealand

Location and geography:	Largest city:
Capital city:	Languages:
History: First people: First Europeans:	Official head:
National anthem:	Wildlife in New Zealand: Species and unique animals:
Nickname for New Zealanders:	

I Complete the table and talk about New Zealand

Location and geography:	Largest city:
Capital city:	Languages:
History: First people: First Europeans:	Official head:
National anthem:	Wildlife in New Zealand: Species and unique animals:
Nickname for New Zealanders:	