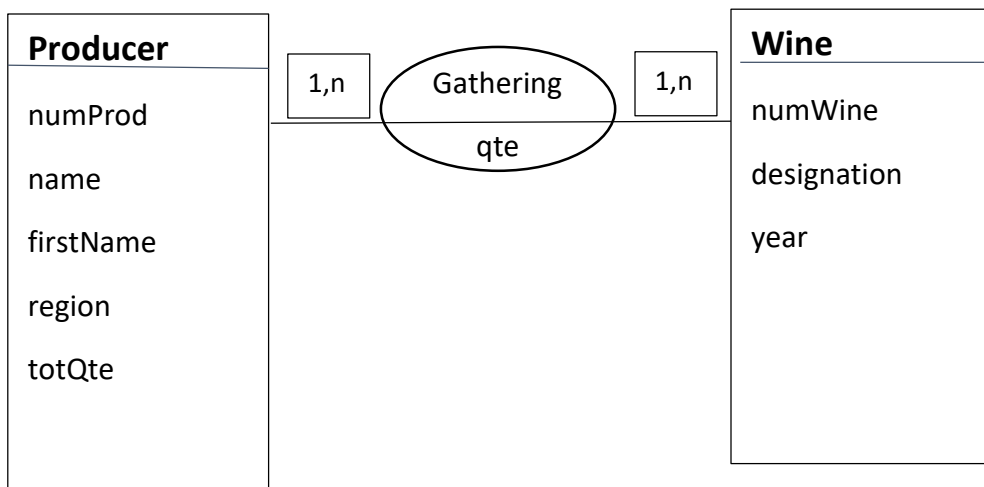


PIM 2018-2019

PL/SQL

Application PL/SQL

In this series, we consider the following conceptual model:



1. Write a script allowing the creation of the tables corresponding to this model.
2. Write a script for the creation of the foreign keys.
3. Write a trigger for table Wine (resp. Producer) allowing to generate automatically the keys (use a PL/SQL sequence). A key of a wine (producer) is the concatenation of the substring "W" (" P") and a number starting from 20 (step 40).
4. Create a procedure that allows to create a new producer. The new producer must have a couple (name,first name) distinct from all the other couples. The procedure displays a message saying if the producer has been inserted into the table or not.

5. Consider again the creation of a new producer and use function `raise_application_error`. The error code must be lower than -20000.

6. Write a procedure which accepts the name and first name of a producer and displays:
 - His region and the total quantity of wines that he has produced.
 - An array of his production ordered by type of wine.